



10 Essential Rudiments

1. Single Stroke Roll
2. Double Stroke Roll
3. Single Paradiddle
4. Double Paradiddle
5. Flam
6. Drag
7. Single Ratamacue
8. The Blushda
9. 5 Stroke Roll
10. 6 Stroke Roll

1 – Single Stroke Roll



Musical notation for a single stroke roll. The notation consists of two groups of four eighth notes each, with a thick horizontal line above each group indicating a roll. The notes are on a single staff with a treble clef and a key signature of one flat. Below the staff, the stroke order is indicated by the letters R and L.

R L R L R L R L

2 – Double Stroke Roll



Musical notation for a double stroke roll. The notation consists of two groups of four eighth notes each, with a thick horizontal line above each group indicating a roll. The notes are on a single staff with a treble clef and a key signature of one flat. Below the staff, the stroke order is indicated by the letters R and L.

R R L L R R L L

3 – Single Paradiddle



Musical notation for a single paradiddle. The notation consists of two groups of four eighth notes each, with a thick horizontal line above each group indicating a roll. The notes are on a single staff with a treble clef and a key signature of one flat. Below the staff, the stroke order is indicated by the letters R and L.

R L R R L R L L

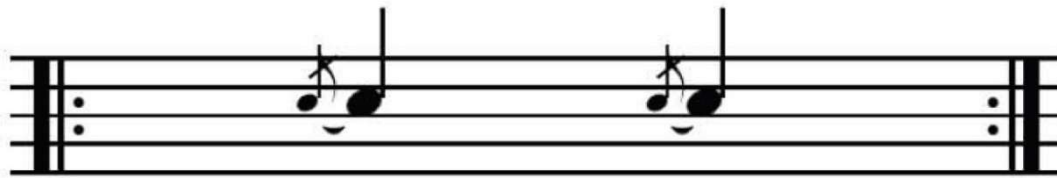
4 – Double Paradiddle



Musical notation for a double paradiddle. The notation consists of two groups of six eighth notes each, with a thick horizontal line above each group indicating a roll. The notes are on a single staff with a treble clef and a key signature of one flat. Below the staff, the stroke order is indicated by the letters R and L.

R L R L R R L R L R L L

5 – Flam



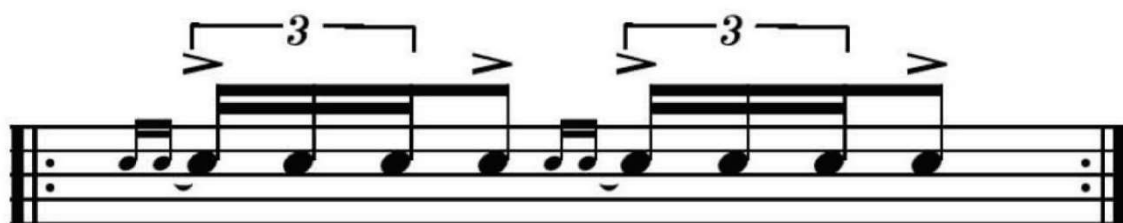
L R R L

6 – Drag



LL RR
R L

7 – Single Ratamacue



LL RR
R L R L L R L R

8 – The Blushda

LR (L) (L) R LR (L) (L) R

9 – 5 Stroke Roll

R R L L R L L R R L

10 – 6 Stroke Roll

R L L R R L